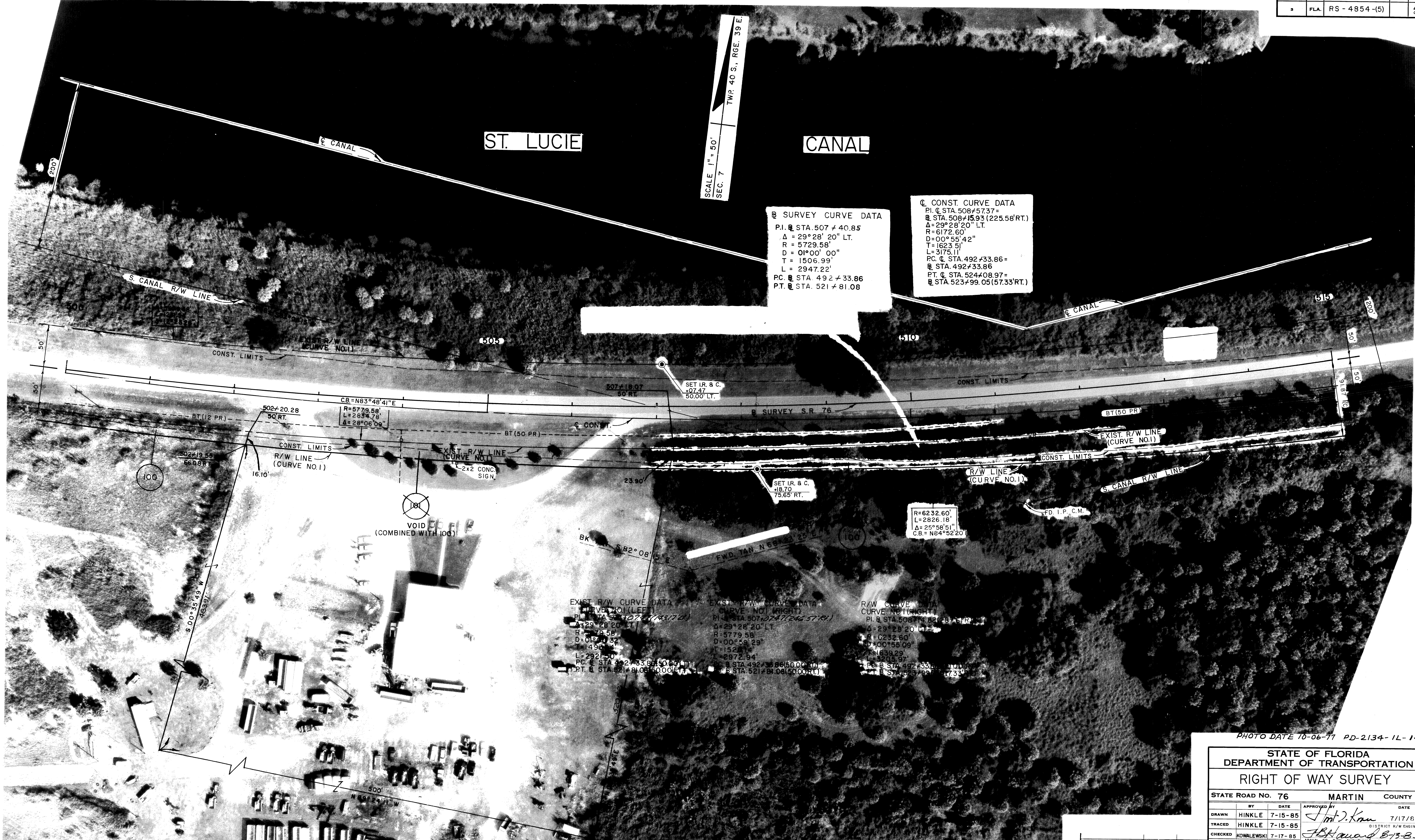


FED. ROAD DIV. No.	STATE	F. A. PROJECT NO.	FISCAL YEAR	SHEET No.
3	FLA.	RS - 4854-(5)		5



**SURVEY CURVE DATA**  
 P.I. @ STA. 507 + 40.85  
 Δ = 29° 28' 20" LT.  
 R = 5729.58'  
 D = 01° 00' 00"  
 T = 1506.99'  
 L = 2947.22'  
 P.C. @ STA. 492 + 33.86  
 P.T. @ STA. 521 + 81.08

**CONST. CURVE DATA**  
 P.I. @ STA. 508 + 57.37  
 P. @ STA. 508 + 15.93 (225.58' RT.)  
 Δ = 29° 28' 20" LT.  
 R = 6172.60'  
 D = 00° 55' 42"  
 T = 1623.51'  
 L = 3175.11'  
 P.C. @ STA. 492 + 33.86 =  
 P. @ STA. 492 + 33.86  
 P.T. @ STA. 524 + 08.97 =  
 P. @ STA. 523 + 99.05 (57.33' RT.)

**EXIST. R/W CURVE DATA**  
 CURVE NO.1 (LEFT)  
 P.I. @ STA. 507 + 07.47 (143.76)  
 Δ = 29° 28' 20" LT.  
 R = 5729.58'  
 D = 01° 00' 00"  
 T = 1495.34'  
 L = 2921.70'  
 P.C. @ STA. 492 + 33.86 (50.00)  
 P.T. @ STA. 521 + 81.08 (50.00)

**EXIST. R/W CURVE DATA**  
 CURVE NO.1 (RIGHT)  
 P.I. @ STA. 507 + 07.47 (246.57 RT.)  
 Δ = 29° 28' 20" LT.  
 R = 5729.58'  
 D = 00° 58' 29"  
 T = 1523.14'  
 L = 2972.94'  
 P.C. @ STA. 492 + 33.86 (50.00)  
 P.T. @ STA. 521 + 81.08 (50.00)

**R/W CURVE DATA**  
 CURVE NO.1 (RIGHT)  
 P.I. @ STA. 508 + 14.82 (28.43 RT.)  
 Δ = 29° 28' 20" LT.  
 R = 6232.60'  
 D = 00° 58' 09"  
 T = 1639.29'  
 L = 3205.97'  
 P.C. @ STA. 492 + 33.86 (50.00)  
 P.T. @ STA. 523 + 99.05 (57.33 RT.)

NOTE: ALL DISTANCES AND ANGLES FOLLOWED BY (M) ARE BASED ON FIELD MEASUREMENTS MADE DURING THE R/W MONUMENTATION SURVEY.

(SEE SHEET 1 FOR NOTES, SURVEYOR'S NOTES, & SURVEYOR'S CERTIFICATE) ● DENOTES R/W MARKER (SET I.R. & C.)

PHOTO DATE 10-06-77 PD-2134-1L-14

STATE OF FLORIDA DEPARTMENT OF TRANSPORTATION RIGHT OF WAY SURVEY			
STATE ROAD No. 76		MARTIN COUNTY	
BY	DATE	APPROVED BY	DATE
DRAWN HINKLE	7-15-85	<i>Jim J. Kowalewski</i>	7/17/85
TRACED HINKLE	7-15-85	DISTRICT R/W ENGINEER	
CHECKED KOWALEWSKI	7-17-85	<i>J. Kowalewski</i>	8-13-85
MAPS PREPARED BY		ADMIN. OF R/W SURVEYING AND MAPPING	
DISTRICT 4		FIELD BOOK NO'S 1009746,	
W.P.1. NO. 4116124		1017764, 1010298, 1018530, 1017763	
SECTION 89060-2508		SHEET 5 OF 17	

ADD MONUMENTATION	EAL	8-1-85
REMOVE PERMIT NOS.	MORAWA	11-4-91
VOID PAR.101, REV. PAR.100	WILSON	12-16-88
REVISION	BY	DATE